

THE CAMPAIGN FOR MSU DEVELOPMENTS

SPRING 2004

\$6 MILLION FROM BROAD FOUNDATION FOR TEACHER EDUCATION INITIATIVE

On November 12, 2003 at the Detroit Economic Club, philanthropist Eli Broad announced a \$6 million pledge from the Broad Foundation to fund a partnership between Michigan State University and the Detroit Public Schools. The goal: to recruit and train a new generation of urban teachers.

“Today, I am honored to announce a new initiative that will link the two institutions that did so much for me—the Detroit Public Schools and Michigan State University—in an effort to create opportunities for Detroit’s students to transform their lives, their schools and their hometowns,” said Broad, chairman of SunAmerica and a graduate of the Detroit Public Schools and MSU. “I want today’s best and brightest Detroit students to become tomorrow’s best and brightest Detroit teachers.”

Students in the Broad Partnership project will receive financial support to cover the cost of attending MSU. After completing the five-year teacher preparation program at the

MSU College of Education, they will return to teach in Michigan’s largest school district.

“This partnership is very much in keeping with the values and mission of the College of

Education,” said Dean Carole Ames. “We are committed to preparing teachers who understand the challenges and opportunities that exist in urban schools, and who will be successful in such settings.”

Highlights of the Broad Partnership project include:

- A three-week MSU summer program for Detroit high school sophomores and juniors designed to expose them to the university and teaching as a career opportunity.
- Graduates of the program who teach in Detroit will have 25 percent of their student loans paid for each year they teach in Detroit.
- The Broad Teaching Fellows program will provide MSU teacher candidates the opportunity to complete a seven-week summer fellowship in the Detroit Public Schools.

“This initiative blends the passion, talents and vision of the Broad Foundation,



Eli Broad announces a new education initiative at the Detroit Economic Club.

continued on page 2

Matilda R. Wilson Fund Gift Names ‘Pegasus’ Center

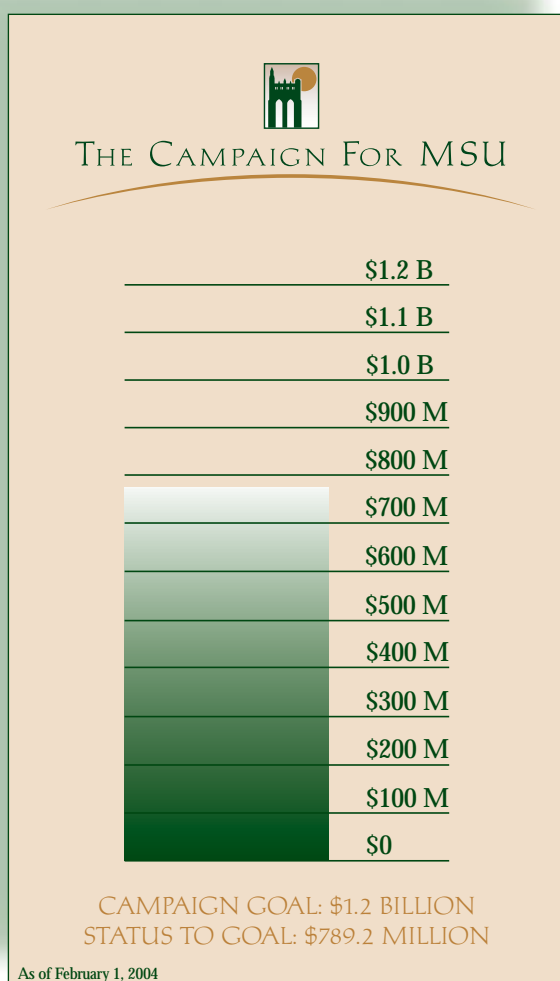
A new addition to the Michigan State University Veterinary Clinical Center that will provide critical care for foals and horses will be named in honor of a former MSU trustee whose foundation, the Matilda Wilson Fund, has pledged \$5 million to the center. At its September 12 meeting, the MSU Board of Trustees voted unanimously to name the new addition “The Matilda R. Wilson ‘Pegasus’ Critical Care Center.”

Matilda R. Wilson served on Michigan State College’s governing board from 1931 through 1937 and was appointed by Governor Luren Dickinson to be Michigan’s first woman lieutenant governor in 1940. The Matilda Wilson Fund has a long history of giving to the College of Veterinary Medicine, including the Matilda R. Wilson Chair and Respiratory Disease Endowment. Pegasus was one of Mrs. Wilson’s harness ponies. The trustees of the Matilda R.



An artist’s rendering of the Matilda R. Wilson Pegasus Critical Care Center.

continued on page 2



MSUFCU SCHOLARSHIP RECIPIENTS

The recent MSU Federal Credit Union gift of \$2.5 million to fund the MSUFCU Endowed Study Abroad Scholarship has already made a difference in the lives of MSU students. The first scholarship recipients were announced on Tuesday, November 25, 2003.

While we anticipate scores of students will benefit for many years, the first five recipients, their colleges, and study abroad programs are:

Ana Aguayo, Business
International Social Issues, Recreation and Service Learning in Mexico

Brandon Corcoran, No-preference
Combined Arts & Humanities and Social Science in the United Kingdom

Nathan Elkins, Social Science
Landscape Architecture in the United Kingdom and Scandinavia

Katie McCabe, Human Medicine
Socialized Health Care Policy in Cuba

Pakapon Phinyowattanachip, James Madison
Multidisciplinary Studies at the Asian Institute of Technology in Thailand

The semi-annual scholarships will allow these students and future students to join the thousands of Spartans who have already lived and learned in another culture, and experience first-hand places others only dream about.

The MSUFCU was chartered by a group of Michigan State University professors in 1937. It has grown to be the largest university-based credit union in the world. The MSUFCU serves 117,000 members worldwide.

For more information on how you can follow the leadership of the MSUFCU and help support MSU students wishing to study abroad, contact University Development at (517) 355-8257 or (800) 232-4MSU.

Wilson *continued from cover*

Wilson Fund and university officials agreed that Mrs. Wilson would have appreciated the recognition of one of her favorite horses in the naming of a critical care facility.

When completed, the center will allow the MSU College of Veterinary Medicine to do research and student teaching while providing state-of-the-art critical care to foals and horses with infectious diseases, in an approximately 13,000-square-foot facility. "Newly emerging infectious diseases are a major threat to horses and farm animals, as well as humans," said Lonnie King, dean of the College of Veterinary Medicine. "Neonatal foals are particularly susceptible to these diseases and often succumb to their effects."

Among the features of the center: a specialized ventilation system that will prevent the spread of infectious diseases, modern sanitation facilities, ten individual isolation stalls, and on-site clinical pathology laboratories. Total cost for construction of the facility is approximately \$3 million.

The remaining \$2 million pledged by the Fund will endow two "Wilson Scholars"—residents who will care for these critically ill animals. It also will help fund a new College of Veterinary Medicine educational program on the specialized care of critically ill farm animals.

The new center will be located in the southwest corner of the existing Veterinary Clinical Center, with close proximity to the McPhail Equine Performance Center. "The Pegasus Center will complement our newly established Center for Emerging Infectious Diseases," said King. "With the world continuing to 'shrink' and with nearly 70 percent of emerging diseases able to pass from animal to human, this will be a critical part of our mission."

For more information about making a gift to the College of Veterinary Medicine, contact CVM Director of Development Karen Winkler-Swanson at (517) 353-4937.



MSUFCU Study Abroad Scholarship recipients pose with the Board of Directors of the MSU Federal Credit Union.

Broad *continued from cover*

the Detroit Public Schools and MSU to find new ways to enhance the quality of education in Detroit," said Provost Lou Anna K. Simon. "By offering aspiring teachers access to the knowledge, faculty and resources of one of the top colleges of education in the country, and by giving them practical classroom experience through this partnership, potential becomes reality, and in a very real way we advance knowledge and transform lives."

In addition to current Detroit students, graduates of the school district already attending MSU and those who transfer from junior colleges, will be eligible to participate.

"This grant is a big boost to our efforts to attract teachers who are highly qualified and committed to urban education," said Kenneth Stephen Burnley, Detroit Public Schools chief executive officer. "It will also allow us to grow our own. Having this caliber of teacher is critical to our mission of increasing student achievement and performance."

Broad grew up in Detroit and attended MSU, where he graduated in 1954. He went on to build two Fortune 500 companies: KB Homes

(formerly Kaufman and Broad Home Corp.) and SunAmerica Inc., a leading financial services company.

In 1999, he established the Los Angeles-based Broad Foundation, an entrepreneurial grant-making organization whose mission is to dramatically improve K-12 urban public education through better governance, management and labor relations. "Eli Broad is a great friend and supporter of the university," MSU President Peter McPherson said. "His generous gift will support a goal his foundation, our university and the Detroit Public Schools share: providing a quality education for all school children."

The MSU College of Education is among the leading schools of education in the country. Its graduate programs in elementary and secondary education have been ranked No. 1 by *U.S. News and World Report* for nine consecutive years.

For more information about the initiative or making a donation to the College of Education, contact Director of Development Jeff Spoeri at (517) 432-1983.

Developments is published by:
University Development
Michigan State University
4700 South Hagadorn Road, Suite 220
East Lansing, MI 48823-5399
(517) 355-8257

Charles H. Webb, Vice President
for University Development
Marti K.S. Heil, Associate Vice President
and Director of Development

Marketing Programs:
Linda Dunn, Assistant Director/Editor
Rick Seguin, Assistant Director
Bob Thomas, Director
Bob Brent, University Artist
Christina Schaffer, Editorial Assistant
Randy Brown, Webmaster
Alicia Crandall, Assistant Director
Becky Miller, Assistant
Brenda Samson, Assistant

Michigan State University is an affirmative-action, equal-opportunity institution.

HOPP ENDOWMENT HONORS FATHER

Throughout an impressive 36-year career in advertising, Tony Hopp has helped numerous clients craft effective means to achieve their strategic marketing goals. As chairman and chief executive officer of Campbell-Ewald, Hopp leads Michigan's oldest and largest advertising agency, the sixth largest in the nation. Under Hopp's leadership, Campbell-Ewald has built a reputation as a firm that consistently offers clients deeper insights and bigger ideas.

Hopp (Advertising and Psychology, '67; Advertising and Marketing, '68) wanted to create a public tribute to the man who inspired his rewarding advertising career. It was no surprise when he came up with an insightful idea that would not only honor this man in a lasting way but also advance a field they both loved. Hopp recently made a gift to MSU of \$100,000 to establish an endowed scholarship program in advertising in the College of Communication Arts and Sciences. This fund, to be known as the William J. Hopp Endowed Scholarship in Advertising, is named in honor of his father.

Though his father William never worked in advertising, he held a deep personal fascination for the field. Hopp credits his father with encouraging



Tony Hopp

him to pursue an education and a career in advertising. It is a direction he has never regretted.

"I am incredibly grateful for the insight, love and encouragement of my father. He played a major role in the shaping of my

future, both professionally and personally," Hopp said. "He set me on a career path that has resulted in an enormously rewarding profession. I can't think of a better tribute to him than to establish a scholarship program that will always be there to help other promising young students access the first-rate education they will need to succeed in advertising."

The William J. Hopp Endowed Scholarship in Advertising will award scholarships to junior, senior or graduate-level advertising students with strong academic records. And because the fund is

structured as an endowment, it will be there forever—helping student after student in honor of William Hopp.

As an added benefit of his generosity, the scholarship Tony Hopp is funding will help further develop the talent pool that Campbell-Ewald frequently draws on in their continuing pursuit of excellence. The agency frequently hires MSU advertising grads and, at last count, some 200 Spartans were employed at Campbell-Ewald.

Tony Hopp's father passed away in 1984, so he never saw the full extent of his son's professional success and perhaps was never fully aware of the role he played in shaping Tony's life. But it is clear to Hopp that his father was a major influence in his professional success. His hope is that this endowed scholarship will forever honor his father by offering the support and encouragement students need to embark on rewarding careers in advertising.

For more information about making a gift to the College of Communication Arts and Sciences, contact Director of Development Brenda Betts at (517) 432-5672.

For information about creating an endowed scholarship in any area, contact University Development at (517) 355-8257.

Wright Fund Supports Commissions At Wharton Center

The newly created William Wright Endowment Fund for New Works and Initiatives recognizes the legacy of former Wharton Center director Bill Wright and will help to support the commission program he began. Since 1992, Bill Wright provided leadership that brought national recognition to Wharton Center. Through aggressive and creative programming, Wharton Center's season calendar rivals performing arts centers found in major metropolitan markets.

In 2000, Bill Wright added a new dimension to the Wharton Center by beginning an innovative program of commissions. In the past four years, original works of jazz, classical music, theatre and dance have been commissioned and their world premieres at Wharton Center have given mid-Michigan patrons an opportunity to experience the thrill and excitement of new works.

DeDe and Rick (Social Science-Prelaw, '68) Coy made one of the first lead gifts to the Wright Fund. They were involved in the initial commission, a play entitled Control-Alt-Delete by Anthony Clarvoe. The Coys hosted a dinner party for Clarvoe to introduce him to the community and were at the reading of the play's first draft. Rick related, "hearing the words for the first time, having the invited guests



Bill Wright

react and provide feedback, knowing the script would be re-written a number of times and finally, seeing the final production was a very interesting and enjoyable inside view of the creative process." DeDe is a past president of Wharton Center's volunteer corps Inner

Circle. As a patron, volunteer and donor, she has made Wharton Center a major part of her life for the past 10 years. "Our gift will help perpetuate this wonderful initiative of Bill Wright for commissioning new works, and now with this endowment fund in Bill's name, the program will continue for years to come."

Another lead gift was made by Betty and Joe (Communication Arts & Sciences, '46) Gadaletto. "Bill Wright has put Wharton Center on the national map," said Joe, "bringing the best national and international artists and touring groups to our com-

munity." He added, "the Wright Fund will create additional visibility for Wharton Center and Michigan State University for being involved in the creation of new works, thus enhancing the national reputations of both in the performing arts world."

Throughout history, the performing arts have played a vital role in nurturing and inspiring the soul. The William Wright Endowment Fund for New



Betty and Joe Gadaletto



Dede and Rick Coy

Works and Initiatives will help to continue that glorious tradition. To date, more than \$200,000 has been donated to the fund.

For more information on contributing to the William Wright Endowment Fund for New Works and Initiatives or to other areas of Wharton Center, contact Director of Development Doug Miller at (517) 353-4640.

Planned Gifts Prove Useful Tools For Many Donors

It is safe to say that, as time marches on, many citizens across the United States are becoming increasingly aware of the need to carefully plan their estates. In fact, Michigan State University has seen a steady rise in the number of alumni and friends who make known their interest in exploring and implementing charitable estate planning strategies in their comprehensive estate plans. While the information and process can appear confusing, it is important to know that there are experienced gift planning professionals in the MSU Office of Planned Giving available to assist you.

Eric and Janice Bauman of Columbia, Maryland, utilized the gift planning resources at MSU recently when they established a charitable bequest from their estate through a distribution of remaining assets from retirement plans and IRAs to fund an endowed scholarship program at MSU. The fund, known as the Eric H. and Janice M. Bauman



Eric and Janice Bauman pose with MSU Director of Planned Giving Dan Chegwiddden during a visit to campus.

Endowed Scholarship, will be used for undergraduate students who are residents of Michigan, with preference given to applicants or students with documented financial need and, when possible, to undergraduate students pursuing degrees within the colleges of Social Science or Agriculture and Natural Resources.

"I received my B.A. and M.A. from MSU, and two of Janice's cousins are MSU alumni as well. We all needed financial aid to make it through," Eric said. "It made sense to us that we should start an endowed scholarship fund. We don't have children, so we thought what better way to help others than to give them the power to build their dreams."

Their bequest will establish the fund as an endowment, a means for MSU to invest the principal of the gift and expend only a portion of the interest earned. Endowments allow MSU to benefit from the fund in perpetuity. "In a way, an endowment makes our future gift a legacy for us," Janice pointed out.

Theodore and Jean Kennedy of East Lansing, Michigan, decided that endowing a fund through a planned gift was also a wonderful way to remember their daughter, Kathleen. The source of their \$60,000 future gift will be the remaining assets from Theodore's retirement IRA.

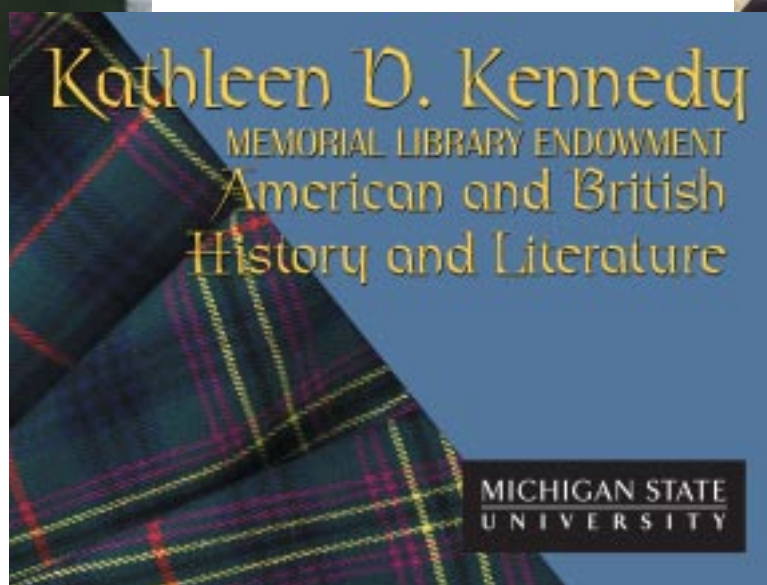
The Kathleen D. Kennedy Memorial Library Endowment will provide funds for the purchase of

British or American Literature and History books and resources for the MSU Libraries. Kathleen was an MSU alumna who loved books and reading. When Theodore and Jean became aware of some planned giving techniques, they saw an opportunity to provide a future gift in Kathleen's honor and memory. Theodore and Jean feel that their daughter would be thrilled to know that generations of future MSU students will benefit from the financial resources generated by the endowment.

Bruce and Marjorie Morrice of Dallas, Texas, were also able to use their retirement plan assets to carefully plan a future gift of \$175,000 from their estate. Their charitable bequest will endow the Bruce A. and Marjorie E. Morrice Endowed Scholarship, a university-wide fund to benefit primarily students from the high schools they attended, Saginaw Arthur Hill High and Marlette High, and possibly others from Saginaw or Sanilac counties.

Marjorie, who received her B.S. from MSU in 1955, earned a tuition scholarship to attend MSU which was crucial to her ability to attend and stay in college. She and Bruce believe their education was vital to their careers, and now their charitable bequest incorporated within their comprehensive estate plans will allow others from their hometown to enjoy and benefit from the "Spartan" educational experience.

The Morrises also used an approach available to all donors, namely the combination of their charitable bequest with current gifts. Such a giving strategy offers them the oppor-



Theodore and Jean Kennedy have created the Kathleen D. Kennedy Memorial Library Endowment in memory of their daughter.

tunity to see their scholarship established now while being significantly enhanced through their charitable bequest specifically designated for their named endowed scholarship fund.

Other donors who have also used this strategy include Paul and Margaret Mistele. The Misteles, of Ventura, California, have made estate plans to direct a charitable bequest to MSU with an estimated current value of \$350,000. Their bequest to MSU will direct \$200,000 for the School of Music and \$150,000 for the Department of Accounting and Information Systems.

Their decision to support the study of accounting at MSU comes from the fact that the profession has been the backbone of their careers in banking and

the financial services industry. Their support for music will establish the Ruth Mistele Endowed Scholarship in Trombone Studies, which complements an expendable scholarship they created with a \$25,000 pledge last year. The fund is named in honor of Paul's mother, who instilled in Paul and his entire family a love of music.

While each college at MSU has professional staff willing and able to answer questions alumni and friends may have about including MSU in their estate plans, Eric Bauman has a simple solution to the problem of getting started. "Read MSU's planned giving booklet—*The Guide to Giving*," he said. "It's wonderful. We never thought seriously about it, but once we started reading that booklet, we saw that it presented a cornucopia of giving opportunities about which we previously had no idea. We were much impressed with the fact that the copy was written by the MSU Office of Planned Giving staff. It certainly instilled confidence that MSU could help us."



Bruce and Marjorie Morrice are pictured with their Hannah Society memento.



Vice President for University Development Chuck Webb (right) presented the Snyder Society memento to Paul and Margaret Mistele.

Perhaps as important as anything that can be read in a booklet is the realization that almost anyone can plan their estate and direct their generosity in a way that is personally satisfying to and tax-efficient for them. "We used to think that charitable estate planning was for wealthy barons and the wealthiest families," Eric said, "But we saw that we could do it as well and we did it with excellent and timely assistance from Michigan State University."

If you would like more information on estate planning, or to request a copy of MSU's Guide to Giving to Michigan State University, call (517) 355-8257, extension 201.

ARNOLDS GENEROUSLY ENHANCE WOOD PRODUCTS PROGRAM

As a student in the Department of Forestry, Frederick Arnold had sought an education that would help him launch a career selling lumber. In the 1930s, however, no formal program existed that would prepare him to deal with the complexities of the sale and marketing of wood products. Instead, Arnold used electives to give him the skills he would need in the business world.

After graduating in 1939, his career path led to insurance and banking, yet Arnold found his forestry education important to his success. As founder and president of the Marflax Corporation, a residential construction finance business he ran for more than 40 years, he worked with lumberyards and their customers to help individuals build their own homes. From his position, Arnold clearly saw the need for professionals who understood not only wood properties and lumber processing, but also the economics and marketing of value-added products. He envisioned a program that would marry business education with technical training in wood products manufacture and use.

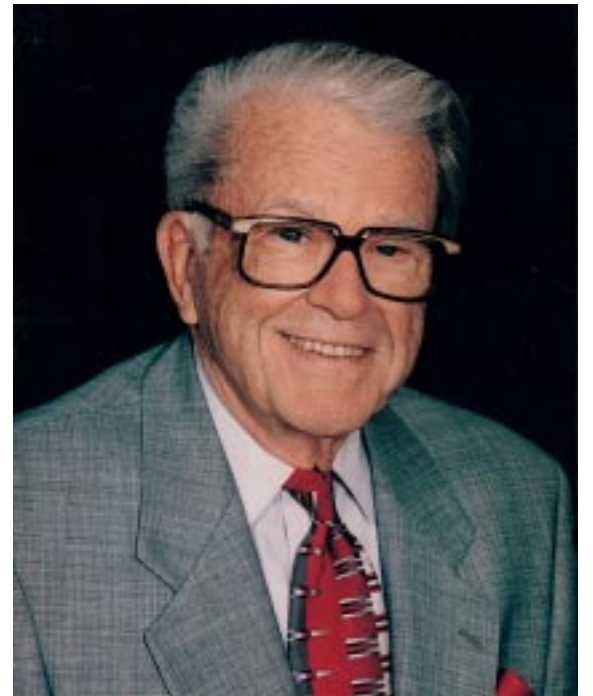
In 1998, Fred and his wife Katherine pledged \$1 million to establish the Frederick M. Arnold Wood Products Manufacturing and Marketing Program at Michigan State University, the nation's first program of its kind focusing on the manufacturing and marketing of wood products. This summer, through their estate plan, the Arnolds added another generous gift to their original pledge. The new donation will greatly enhance the endowment

fund for the Frederick M. Arnold Wood Products Manufacturing and Marketing Program.

Last fall, for the first time, students were able to enroll in courses developed for the new program. Program coordinator Laurent Matuana, an assistant professor of composite materials, was hired in 2002, and a new comprehensive curriculum for the undergraduate program has been developed that focuses on preparing students to deal with the complexities of the sale and marketing of wood products. An estimated 150 students will enter this new program when it is fully operational.

"The Frederick M. Arnold Wood Products Manufacturing and Marketing Program will serve an important industry need for professionals who understand manufacturing and marketing of wood products," said Dan Keathley, chairperson of the Department of Forestry. "Thanks to the vision and generosity of Fred and Katherine Arnold, this program will help us to remain one of the top forestry programs in the nation."

Fred Arnold, originally from New Jersey, makes his home in Ann Arbor. However, he has been a life-long supporter of MSU and its programs—he even established a Michigan State Alumni chapter in Ann Arbor in 1946. He is a former member of the University Development Board of Directors and was the 2001 recipient of the MSU Outstanding Philanthropist Award, presented by the MSU Alumni Association in conjunction with University Development. The Arnolds are members of the Frank S. Kedzie Society, one of the



Frederick Arnold

university's most prestigious donor recognition groups, which honors donors making commitments to MSU totaling between \$1 million and \$5 million.

"Michigan State has been a part of my life for a very long time," Arnold said. "This endowment allows me to give something back to the university at the same time it promotes the long-term future of the industry that has been a big part of my livelihood. I'm proud to be able to serve both of these interests through this endowment."

For more information about making a gift to the College of Agriculture and Natural Resources, contact Associate Director of Development Cara Boeff at (517) 355-0284. For information about creating an endowed fund in any area, contact University Development at (517) 355-8257.

Guilfoyle Gifts Benefit Osteopathic Medicine And Natural Science Colleges

When Mark and Toula Guilfoyle first arrived at MSUCOM as students in 1980, they knew the experience would change their lives, but perhaps they didn't know how much. After all, they didn't yet know each other.

They met as first-years, and the rest, as they say, is history. By the time they graduated with the Class of 1984, they were already married. Both have since gone on to successful careers in osteopathic medicine. Mark is a board-certified radiologist and Toula is board-certified in family medicine. They live in the town of Sand Point, in the thumb area of Michigan.

"Everything that we have, we owe to the college," said Toula. "It is because of this school that we have achieved so much."

The Guilfoyles have certainly demonstrated their appreciation for their alma mater. They recently pledged a substantial gift of \$100,000 to the College of Osteopathic Medicine, to be used to refurbish the student lounge in the basement of Fee Hall. This is just one of several donations and planned

gifts they have made to the college and to Michigan State University. They had previously established the Guilfoyle and Milios Endowed Scholarship, which supports students currently in MSUCOM.

They have also made a \$40,000 pledge to the Lyman Briggs School in the College of Natural Science to improve laboratory conditions there. "We thought it was essential for the students there to have up-to-date facilities in which to conduct their lab work and experiments," said Toula.



Mark and Toula Guilfoyle

As part of *The Campaign for MSU*, Briggs is seeking dollars to renovate the laboratories in Holmes Hall, which haven't undergone significant changes since it opened its doors in 1967. The campaign will fund a

complete renovation of all science laboratories that will cost the school \$2.5 million. Motivated by a desire to aid students working toward careers in Osteopathic Medicine, Veterinary Medicine and Natural Science, the Guilfoyles have also made an additional planned gift to these colleges.

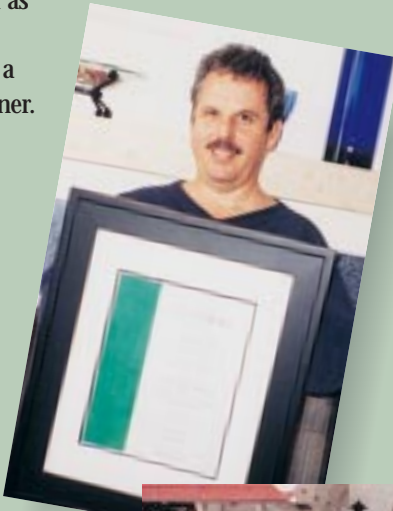
"We are amazed by what the college has done," Toula said, "and we know it can accomplish so much more." The Guilfoyles are currently members of MSU's Theophilus C. Abbot Society, which recognizes donors who make a commitment between \$250,000 and \$499,999, or a documented planned gift of at least \$500,000.

For information about the Laboratory Renovation Campaign in Lyman Briggs, please contact Assistant Director of Development Ted Kluck at (517) 432-9738. For more information about making a gift to the College of Osteopathic Medicine, contact MSUCOM Director of Development Sharon Snyder at (517) 355-8355.

STRATEGIC CAMPAIGN INITIATIVES

Members of the West Coast Regional Council (WCRC) traveled to Coronado Island, California, for the group's sixth annual meeting at the historic Hotel del Coronado. Ruth Charles and Carolyn Cosgrove served as co-chairs for this weekend event on September 6 and 7. On Saturday, 114 MSU alumni and friends from throughout Southern California, as well as several university officials, attended a reception and dinner. Bill Mechanic, president of Pandemonium Films, was the keynote dinner speaker and recipient of the 2003 Spartan Spirit Award. This award is presented annually by the WCRC to an alumna or alumnus on the west coast for service to MSU. On Sunday, council members met with university officials to discuss *The Campaign for MSU* and the work of the council on the west coast.

Bill Mechanic received the Spartan Spirit Award from the WCRC.



collectively given more than \$60 million in support of the campaign thus far.

On December 13, MSU made college basketball history when the Spartans and the Kentucky Wildcats played at Ford Field in Detroit in front of a basketball world-record crowd of 78,129.



The game also set a North American Record, Indoor Record, Collegiate Record and a Michigan State Record. About 200 donors attended a pre-game event at the stadium



Guests showed their Spartan spirit at the Ford Field stadium rooftop pre-game reception.

The basketball court is set up in the middle of Ford Field.

rooftop hospitality suite, where President McPherson, Trustee David Porteous and Athletic Director Ron Mason spoke to the crowd. The group was treated to a visit from Head Men's Basketball Coach Tom Izzo, who spoke briefly before the game.

The Chicago Area Alumni hosted Provost Lou Anna K. Simon, Alumni Director Keith Williams, James Madison College Dean Sherman Garnett, and several members of the MSU Development staff on December 15 at the Sheraton. Provost Simon updated everyone on *The Campaign for MSU* and other campus news. Not only did alumni attend, but prospective students and their parents were also invited to visit with alumni and the provost. Alumnus Peter Hendrick (Arts & Letters, '88) was presented with his



Peter Hendrick received his Presidents Club memento from Provost Simon in Chicago.

At the September PCC meeting, then Interim President and Provost Lou Anna K. Simon and guests were treated to a live phone conference with Peter McPherson from Iraq.

Presidents Club memento by the provost as a part of the evening's celebration.

The President's Campaign Cabinet (PCC) gathered at the James B. Henry Center for Executive Development on September 19. PCC Co-Chair Glenn Schafer facilitated the group's annual meeting, which featured a current MSU overview by then Interim President and Provost Lou Anna K. Simon and Trustees Dolores Cook and Randall Pittman, as well as a live phone conference with Peter McPherson from Iraq. An update of the status of *The Campaign for MSU* revealed that 75% of all colleges and programs have reached at least 50% of their individual campaign goals, and PCC members themselves have



The West Coast Regional Council posed outside the Hotel del Coronado at their meeting in September.



Parker Donates \$100,000 From Kyoto Prize To SOAR Telescope

Eugene Parker (Physics, '48) was named the 2003 recipient of the Kyoto Prize for Lifetime Achievements in Science—considered one of the world's leading awards for lifetime achievement. Dr. Parker received a cash gift of 50 million yen (approximately \$400,000) and donated \$100,000 to the College of Natural Science's SOUTHERN Astrophysical Research (SOAR) Telescope project.

Dr. Parker, Professor Emeritus at the University of Chicago, has served as chairman of the Astronomy section of the National Academy of Sciences and has received numerous awards, including the United States National Medal of Science. He is cited for establishing a new perspective on astrophysics by

discovering the solar wind and other cosmic phenomena. His 1958 theoretical prediction of a solar wind triggered drastic changes in the perception of space. He was awarded the DSc from MSU in 1975.

When the SOAR Telescope is operational later this year, the 4.2 meter aperture optical/Infrared telescope will provide the best quality images of any telescope in its class. The SOAR Telescope will be the centerpiece for MSU's astronomical research. Much of MSU's observing and experiments will be conducted from the East Lansing campus via a special control room connected to the SOAR Telescope in the Andes Mountains of Chile.

With five decades of experience in advancing astronomy and astrophysics, Dr. Parker understands

the importance of the SOAR Telescope to the world-class physics and astronomy program at MSU. His gift helps the faculty, graduate students and everyone who visits the SOAR control room in the Biomedical and Physical Sciences Building.

For more information about contributing to the SOAR Telescope, contact College of Natural Science Director of Development Suzette Hittner at (517) 353-1637.



Eugene Parker

CARLSON GIFT BENEFITS NURSING & HUMAN MEDICINE

Kathleen and R. Troy Carlson know the benefits of teamwork. The Michigan State University graduates' partnership extends well beyond the confines of the home where they're raising their three children. The nurse-physician couple has spent the last several years building a successful medical practice, Family Tree Medical Associates, in Hastings, a small town about 50 miles southwest of Lansing.

Kathy (Nursing, '90 & '94) and Troy (Physiology, '90; Human Medicine, '95) recently pledged \$100,000 to the College of Nursing and the College of Human Medicine—a commitment they hope will help future nurses and physicians learn the value of working together. Relationships between nurses and doctors can be strained if either party fails to value the education, ability or decision-making power of the other, the couple emphasized. Though they don't expect others to find wedding bells through their work together, the Carlsons—who met on the job—want their donation to strengthen professional ties.

"Michigan State University helped shape and mold our success and our philosophy," Kathy said. "They helped prepare us for our future. What better way to leave a mark than to help prepare the next generation to care for the future?"

The Carlsons met in the winter of 1991 while working in an intensive care unit at a Lansing hospital. Kathy was a nurse, and Troy was a medical orderly working under Kathy's supervision. They often worked together. Troy helped Kathy with patients, sometimes transporting them with her to other areas of the hospital, or performed general errands in the intensive care ward.

Familiar with the sometimes-challenging doctor-nurse relationships, the Carlsons live and work by the premise that they are equals in the world of medicine. Ironically, it was their days when she was supervising him as an orderly that helped cement their strong feelings about working as equals. "That job allowed us to see the relationships between physicians and nurses," Kathy recalled. "Troy saw me interact with the medical residents—and sometimes teach them a thing or two. He saw what nurses did and the real value of them. Thankfully, his value system allowed him to believe in the importance of a good physician-nurse relationship." Troy added, "our job is a shared responsibility. It's bigger than any one person can handle."

And though they've worked with students from both the nursing and human medicine colleges over the years, the Carlsons recently took a leap to give back to the university that gave them a solid foundation upon which to build.



Troy and Kathy Carlson

The couple's gift will be split evenly between the College of Nursing and the College of Human Medicine. And while the money has not yet been earmarked, Kathy says it is her hope the money may be used to help create and cultivate opportunities for nurses and physicians to work together. Through course work, social events or other activities, Kathy hopes that the money may be used to help those in the medical profession work together in a more effective way, which will have the added benefit of helping patients.

The Carlsons are not what you picture as typical donors. For starters, they're young—both in their 30s. But their giving hearts, affirmed through prayer and joint discussions about how to plan their estate for their children's future, brought them to the decision to return so generously to their alma mater.

"It's important to give back," Troy said. "If we can demonstrate a willingness to give at this age, then maybe others will believe that they can have that opportunity, too."

For more information about making a gift to the College of Nursing, contact Director of Development Sherry Wilson at (517) 432-1187. For more information about making a gift to the College of Human Medicine, contact CHM Director of Development Doug Moffat at (517) 353-5153.

Former MSU Annual Fund Student Caller Joins Presidents Club

As a student caller for MSU's Annual Fund, Deborah J. White (Business, '96) spent three years asking alumni to join the Presidents Club. She was a top caller in the student-run program and was promoted to a student manager position responsible for training new callers. "While I was a student at MSU, I spent most of my evenings calling alumni and asking them to support the Annual Fund," she explained. Deborah excelled at her position and alumni loved speaking with her. "The greatest part about the job was getting the chance to talk to alumni. As a student, there is nothing more motivating than hearing about all of the wonderful opportunities an MSU education afforded our alumni—it truly changed the lives of so many people."

Upon graduation, Deborah accepted a position with Accenture, a management consulting and technology services company. Now based in Chicago, Deborah is a Client Relationship Manager for the consulting arm of Accenture. "My experience working at MSU's Annual Fund prepared me for my career," she said. "As a student, I had the opportunity to manage a large group of individuals, create strategic plans, execute status meetings, and evaluate and mentor a staff. All of these responsibilities prepared me for my consulting career. I owe so much to MSU for the education I received—both in and out of the classroom."

"I enjoy receiving calls from student callers in MSU's Annual Fund—I know exactly how the students feel placing those calls every night. I was so pleased to join the Presidents Club over the phone with the student caller. I knew the excitement it would create in the Annual Fund that evening."

Deborah is engaged to Timothy A. Stratton, a public finance bond lawyer with Chapman and Cutler LLP in Chicago. A June 2004 wedding is planned for the happy couple.

For more information about joining the Presidents Club, contact Director of Special Gifts Sarah Blom at (517) 355-8257, extension 273 or via email at blom@msu.edu.



Deborah White and Timothy Stratton



4700 S. Hagadorn Road, Suite 220
East Lansing, MI 48823-5399

Non-profit Org.
U.S. Postage
PAID
East Lansing, MI
Permit No. 21

Spartans Spice It Up At Alamo Bowl



Spartans gathered in San Antonio on December 28 at The Vault (Boudro's on the Riverwalk) to celebrate a successful Spartan football season. Over 300 MSU donors and friends joined President Peter and Mrs. Joanne McPherson; Board of Trustees Chairperson David Porteous; Trustees Dolores Cook, Dorothy Gonzales, Colleen McNamara, Donald Nugent, and Scott Romney; and Athletic Director Ron Mason in showing their Spartan spirit. Guests enthusiastically welcomed Head Football Coach John L. Smith while Sparty, the MSU cheerleaders, and the Spartan Marching Band entertained the group.



President McPherson talked with Mary & Gordon Guyer, and Charlotte & Fred Poston as MSU Marching Band members waited to perform.

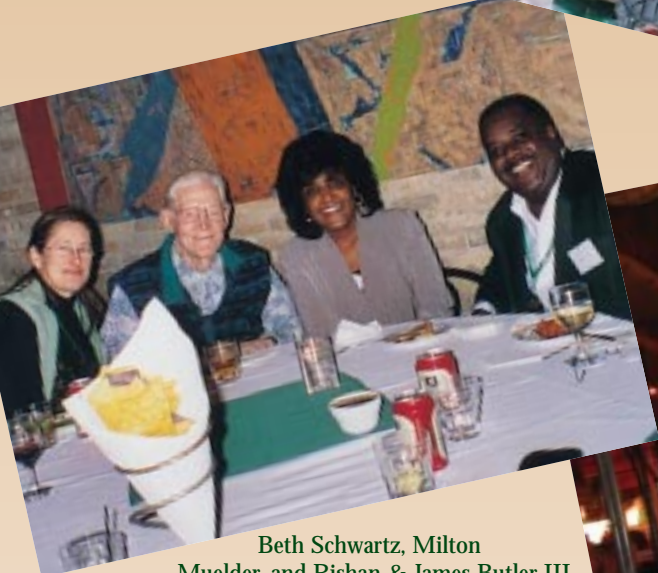
Jill & Gary Witzenburg and Dee & Dick White entered The Vault.



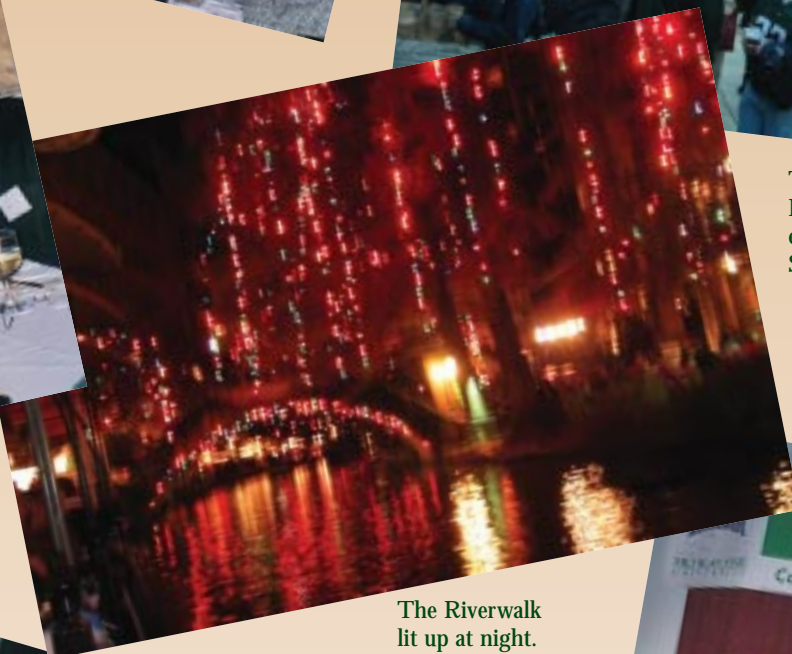
The MSU Marching Band entertained Spartans.



Guests enjoyed the Spartan comraderie at The Vault.



Beth Schwartz, Milton Muelder, and Rishan & James Butler III enjoyed conversation at the Sunday evening event.



The Riverwalk lit up at night.



Head Football Coach John L. Smith talked to the group.



Athletic Director Ron Mason posed with his wife, Marion, at The Vault.

Dottie & Jack Withrow and Bruce & Sheryl McCristal enjoyed the gathering of Spartans.

